

Hospice volunteers play an essential role, performing most of the domestic tasks at Arohanui Hospice. They also help with the creative living and day stay programmes, in reception, and maintaining the gardens.

Enquiries from people wishing to join the volunteer team are welcomed.

Each year Arohanui Hospice needs to raise over \$2,2 million from the community, over and above government funding, to ensure we can continue to provide our services free of charge.

You could also attend one of our many fundraising events—check our website for details or call the fundraising team on 06-356 6606.



Carving designed and carved by Henare Perenara.
Dedicated to the memory of his wife Ani and to those
who have passed through Arohanui Hospice.



Based in Heretaunga Street, Palmerston North, Arohanui Hospice provides services for all people in the following districts and towns:

- ◆ Palmerston North City
- ◆ Manawatu District
- ◆ Horowhenua District, including Otaki
- ◆ Tararua District
- ◆ And the towns of Bulls, Marton, Hunterville, Taihape and surrounding areas.



**1 Heretaunga Street, PO Box 5349,
Palmerston North 4414, New Zealand**

0800 666 676

www.arohanuihospice.org.nz



Find us on Facebook
www.facebook.com/arohanuihospice

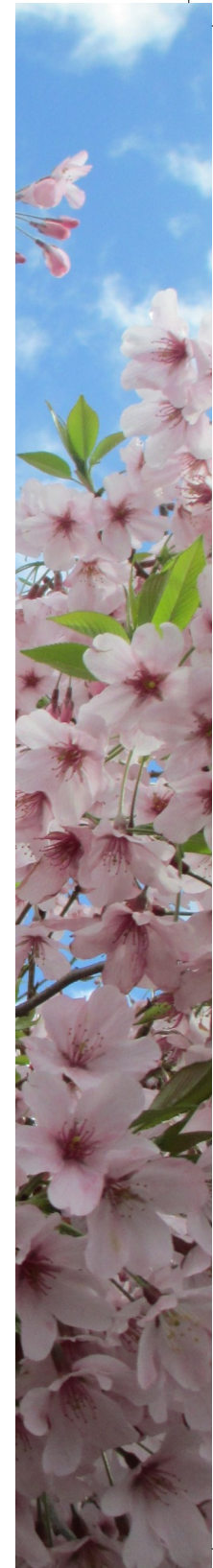


Artwork painted and donated to Arohanui Hospice by Lynne Dann, Registered Nurse



Gaining the most from life

Whakatipua tō ao



About Arohanui Hospice

What we value:

- ◆ Arohanui Hospice is dedicated to caring for individuals with life-limiting illnesses, and their families and whānau.
- ◆ We treat patients, whānau, partners and each other with kindness and empathy. We connect with patients and whānau individually and personally engage them as partners in decisions about their care.
- ◆ Our services are flexible and responsive to the individual needs of all people living in our region.

The Arohanui Hospice service:

- ◆ Accepts dying as a normal process and seeks neither to hasten nor postpone death.
- ◆ Works collaboratively with other services to meet the needs of patients and families/whānau; such services include General Practice teams, hospitals, residential care facilities, District Nurses, Māori Health Providers, support agencies and the Cancer Society.
- ◆ Is FREE to all those who need it, although some non-hospital services such as prescriptions, special equipment, and mobility parking cards, may incur a charge.

The people we work for

Arohanui Hospice is here to help anyone living with a life-limiting illness in the MidCentral Health region as well as the Bulls, Marton, Hunterville and Taihape areas.

Our services are used by people with any life-limiting illness—be it cancer, respiratory disease, heart disease, HIV-AIDS or any other illness from which recovery is not usually anticipated.

We provide care wherever people need it—at home, in hospital, in residential care or in the Arohanui Hospice inpatient unit

Community care

Our patients spend most of their time at home as this is generally where they prefer to be.

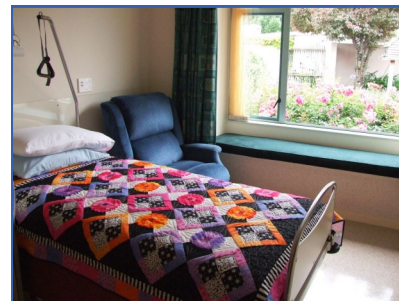
At Arohanui Hospice we have a team of community nurses (Palliative Care Co-ordinators) who support people at home by providing specialist palliative care nursing support and advice as well as co-ordination of their care, using the back-up of the inter-disciplinary team at the hospice.

The Palliative Care Co-ordinators work in partnership with other professionals such as GPs, Practice Nurses, Māori Health Providers and District Nurses in providing that care.

Arohanui Hospice maintains its involvement if a patient needs to enter a residential care facility for ongoing care.

Inpatient unit

Arohanui Hospice has a modern, purpose-built, 10-bed inpatient unit in Palmerston North, staffed by experienced palliative care doctors, nurses and allied health staff.



Patients may be admitted to:

- ◆ receive treatment to relieve or manage distressing symptoms.
- ◆ allow carer support and family well-being.
- ◆ have social, emotional and spiritual issues addressed, which may have arisen during the patient's journey.
- ◆ provide a safe place where patients can die if dying at home is not appropriate.

Day admissions can be made for some minor treatments or surgical procedures.

Social/family support service

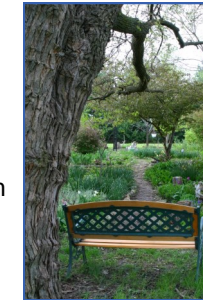
Social work and family support professionals offer personal and practical support to patients and families, in both the inpatient unit and in the community.

Patients and their families/whānau are encouraged to meet with our family support team members to discuss any personal concerns they might have as they face this stage of their life journey.

This service also provides information about, and access to, services or support that might be available, and advice on eligibility and funding assistance to obtain those services.

Pastoral/spiritual support

Arohanui Hospice staff provide appropriate spiritual support for patients and families under their care. Our spiritual care coordinator works as a member of the multi-disciplinary team. In consultation with other spiritual care providers in the community the spiritual care coordinator offers pastoral care that can assist patients and families as they adjust to the challenges of a life-limiting illness. The spiritual care coordinator is available for general personal support, working in the inpatient unit and the community.



Bereavement support

Our grief and loss support team at Arohanui Hospice provides support for any person, of any age, who has suffered the loss of a significant person in their life. Team members can provide access to resources to help those who are grieving as they experience difficult times in their journey and encouragement to travel this road in their own way and in their own time.

Visiting

Arohanui Hospice has an open-door visiting policy, welcoming patients' families and friends. Limited overnight accommodation is available for those who want to stay on the premises, by arrangement with the inpatient unit charge nurse.



Telephone support

We offer advice and support 24 hours a day. Including an after hours phone service, a registered nurse in the inpatient unit is available to provide support, advice, and can contact a doctor or district nurse if needed.

Day stay creative living programme

Arohanui Hospice runs this programme in Palmerston North and Levin. Day Stay offers opportunities to rediscover creative skills, try new activities, and relax in the company of other patients with the support of staff and volunteers. Meals and refreshments are provided.



Hospital care

The Palmerston North Hospital Palliative Care Team is available to see hospital patients needing palliative care. The doctor and nurses can offer advice on the relief of symptoms, plan discharges home, or arrange transfer to Arohanui Hospice as appropriate. Arohanui Hospice works closely with this team.

Education and research

Arohanui Hospice has an education and research unit as part of its service.

An education programme is provided by an interdisciplinary team and aims to share specialist palliative care knowledge, skills and experience with generalist providers and allied health teams.

Referring a patient

Patients can be referred to Arohanui Hospice by their GP, or hospital medical officer. However, as we are a community organisation, any person (be they patient, family member or health professional) should feel free to contact us if they know someone living with a life-limiting illness who could benefit from our services.