

From the Chief Executive and Board Chair.

And another year passes...welcome to our Annual Impact Report for 2022/2023. This report is just one way we can show immense gratitude to our regional community for supporting the work we do. You provide at least 45% of our operational funding and the contribution made by volunteers adds to this.

Our care of patients and families happens mostly in the community, assisting people to be in their own home with whanau. Our inpatient unit provides care and symptom management to those who need to come in for a few days, generally before returning home. We have invested substantial resources to train registrars and, more recently, nurse practitioners to become specialists in palliative care. Our medical team works in the hospice and the community. This year we have committed to increasing the family support team which includes social workers, an occupational therapist, spiritual support and bereavement support staff. We are proud of our people and the wrap-around care we provide.

We have also been able to, with unanimous Board backing, address disparities in wages for our nurses and other staff, thanks to funding from Te Whatu Ora and again our generous community. It is

crucial we retain specialist staff and also recruit excellent people as we continue to deliver the best service we can. The number of patients needing palliative care and support in the next 10 to 20 years will increase substantially. We are committed to being ready to meet this need.

As we move into 2024, the hospice team is thinking and planning for our future in terms of facilities and service delivery. There are exciting times ahead and we look forward to sharing these with you. The Arohanui Hospice reach is far and our gratitude runs deep. Thank you, everyone, for your help and wonderful generosity.

Aroha mai, aroha atu.

Clare Randall
Chief Executive

Lorraine Vincent
Trust Board Chair



Arohanui
HOSPICE

Our Impact

1 July 2022 - 30 June 2023

Freephone: 0800 666 676
Phone: 06 356 6606
Email: hello@arohanuihospice.org.nz
Address: 1 Heretaunga Street, Palmerston North 4414
Postal: PO Box 5349, Palmerston North 4441



@arohanuihospice
www.arohanuihospice.org.nz

Arohanui
HOSPICE

Returning Care and Aroha To You Every Year

Our impact is much more than numbers and statistics. At the heart of hospice is our philosophy of care, being holistic – taking into consideration a person’s entire being and needs. These figures reflect at a glance how many people, between 1 July 2022 - 30 June 2023, relied on the services that Arohanui Hospice provide, and the scale of which we need to be growing to keep up.


Since 1991, Arohanui Hospice has supported a population of over 200,000 across our vast region and delivered excellent care and support to those with life-limiting illnesses and their families/ whanau. Our care is provided free of charge and approximately 54 percent of our funding comes from Te Whatu Ora, with the remaining funding shortfall of \$3.5 million being raised in our community. We pride ourselves on providing quality specialist palliative care to our patients and the wider medical community, so that those in our region with life-limiting illnesses can live their life to the fullest with empathy, compassion and above all, with aroha.

 We cared for **1,072** patients

 We received **943** new referrals for our care  averaging **79** per month.

Approximately **4,410**  family members were supported.

45,939 Interactions by our clinical specialists, to patients and families in the community.

Our community nurses made **3,037** visits 

Community Snapshot

78% of our patients were cared for entirely within the community. **209 days** is the average time patients spent in our care within the community.

189,983 kms were travelled by our community nurses.

Education Snapshot

82 education and training sessions held for medical professionals. **652** doctors, nurses and care assistants trained in palliative care in the region.

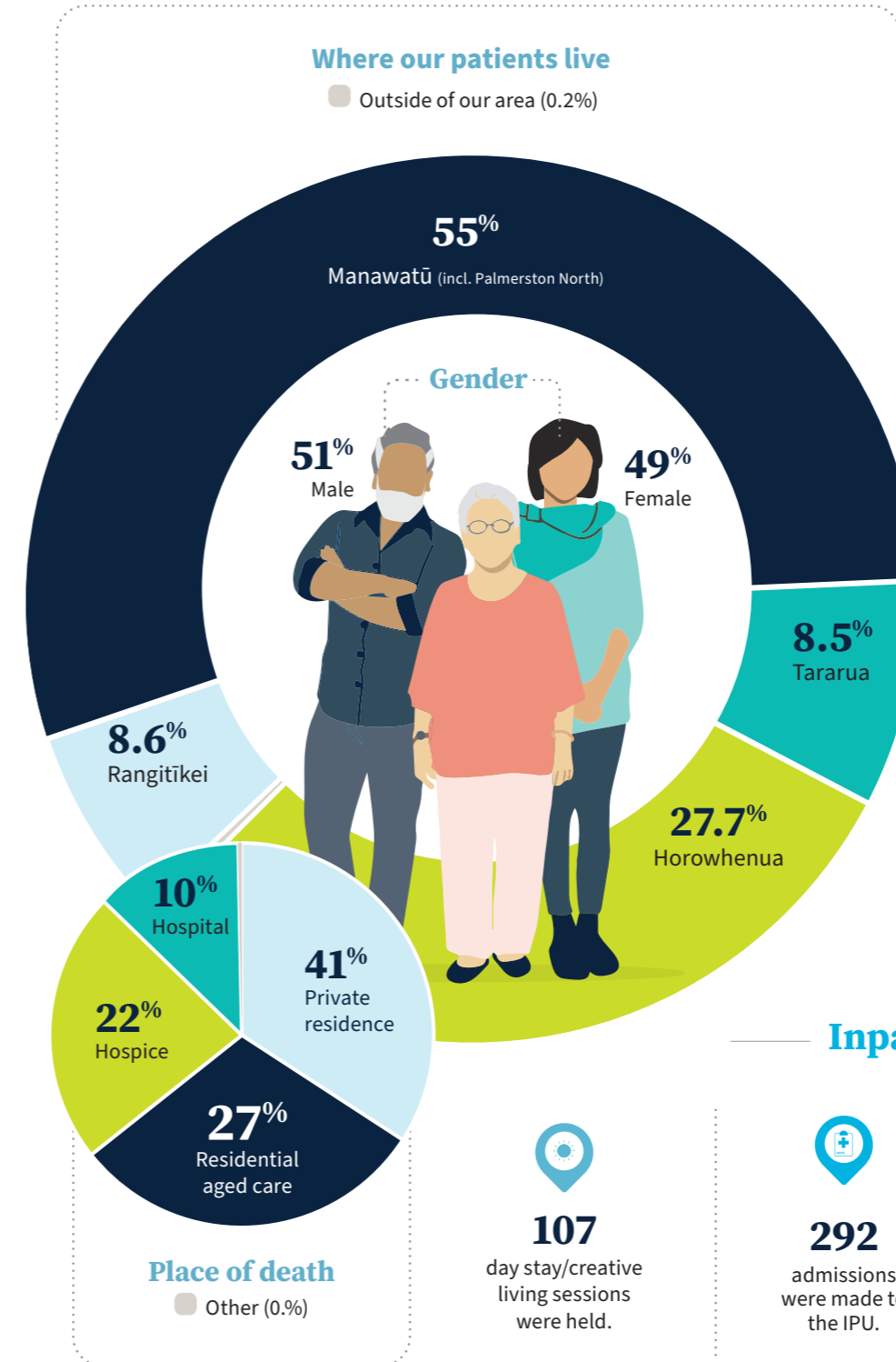
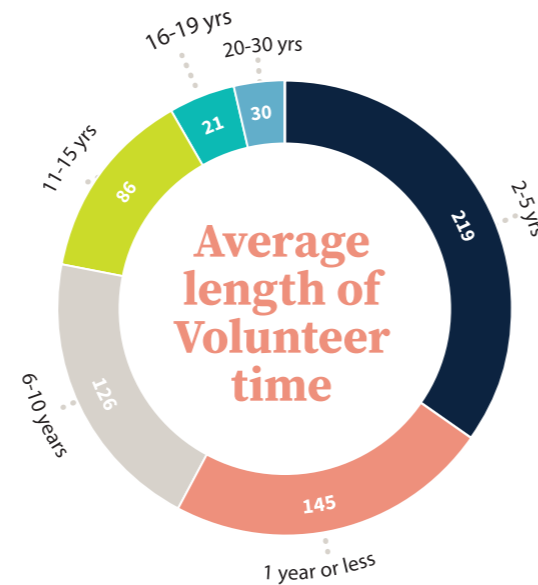
704 The number of times, our range of education services were attended.

Volunteer Snapshot

627 total volunteers

Over **60,000** hours were generously donated.

If paid the living wage of \$26/hr **our volunteers contributed \$1,560,000 worth of time.**



Our patients' ethnicities

- 73% NZ European
- 15% NZ Māori
- 7.5% European (undefined)
- 2% Asian
- 1.8% Pasifika
- 0.1% Unidentified
- 0% African
- 0% Middle Eastern

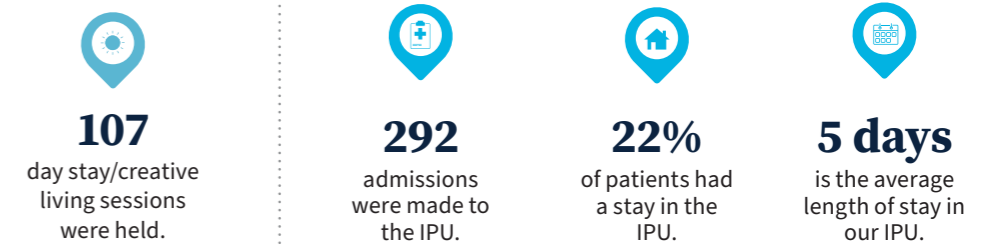
Diagnosis



Our patients' ages

- 10% 90+ years
- 29% 80-89 years
- 28% 70-79 years
- 19% 60-69 years
- 8% 50-59 years
- 4% 40-49 years
- 2% <40 & under

Inpatient Unit Snapshot



Fundraising Snapshot

